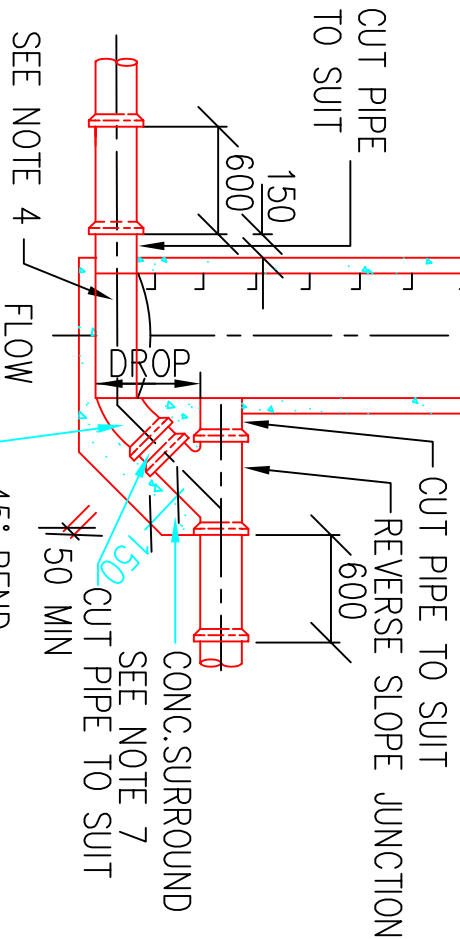
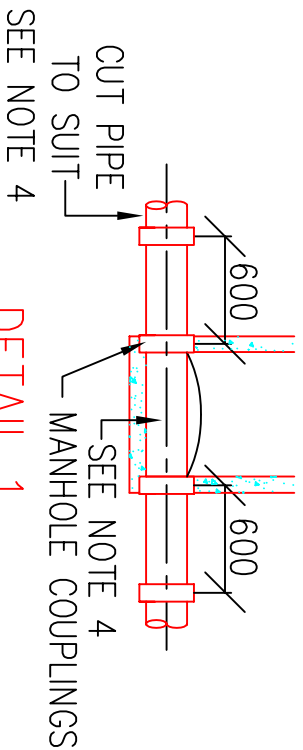


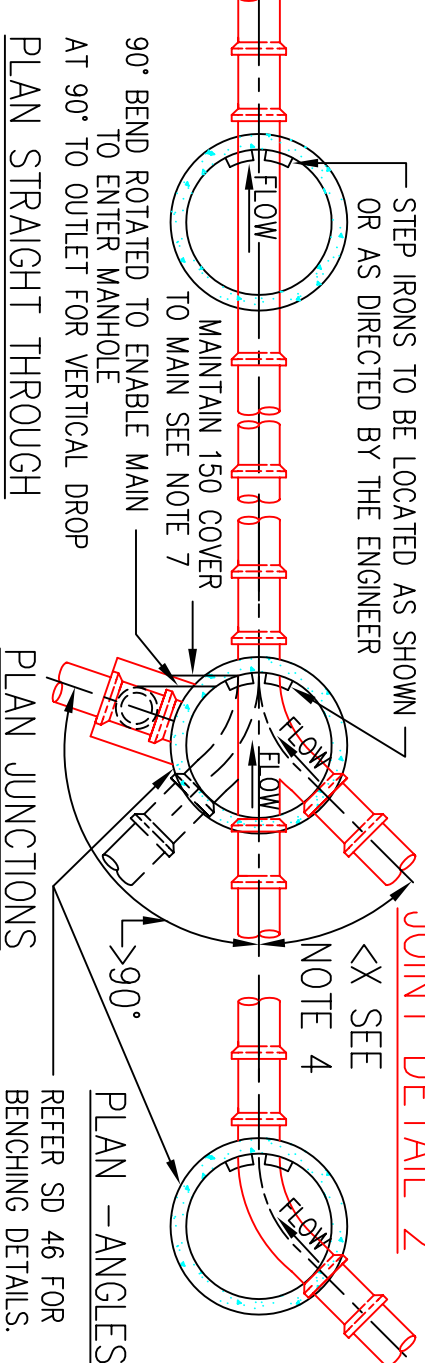
MANHOLE COVER TO BE SEATED ON LAYER OF 'COMPRIBAND' OR EQUIV.



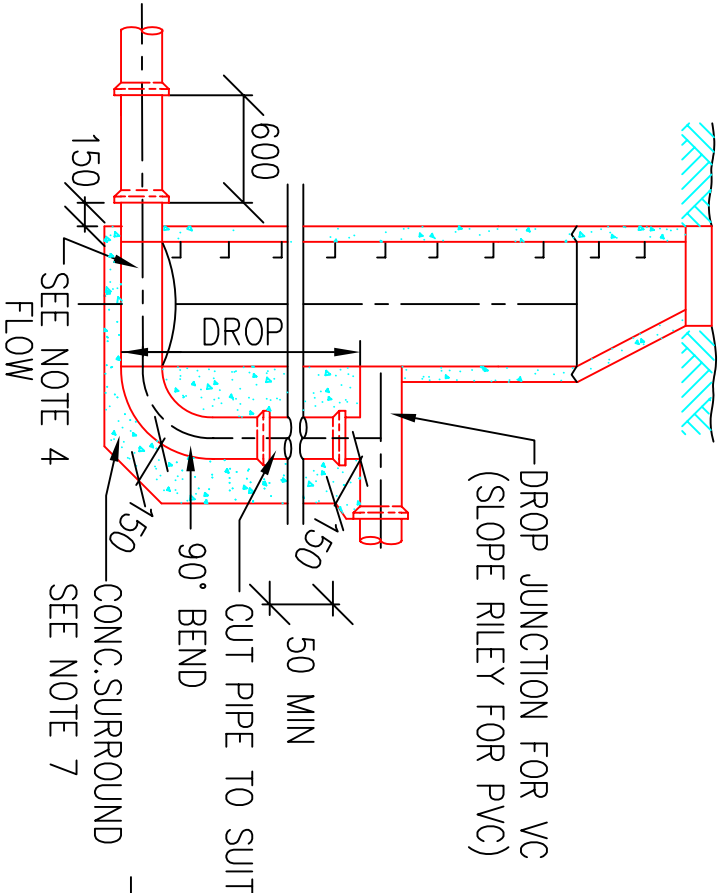
SECTION C - SLOPE DROP



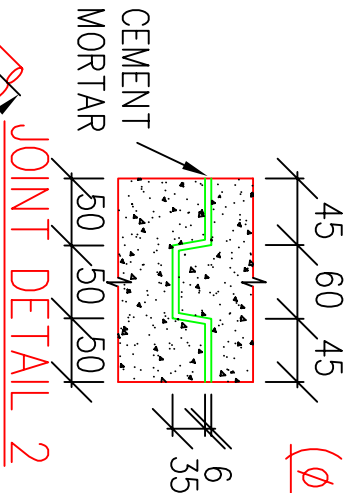
DETAIL 1



PLAN VIEWS MANHOLE TYPES 1, 2 & 3.

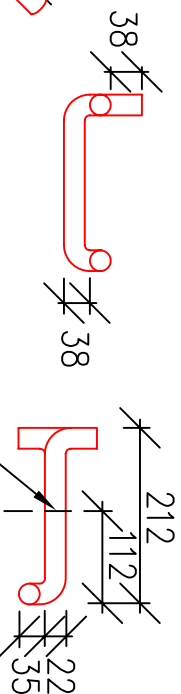


SECTION D - VERTICAL DROP  
( $\phi 150-\phi 300$ )

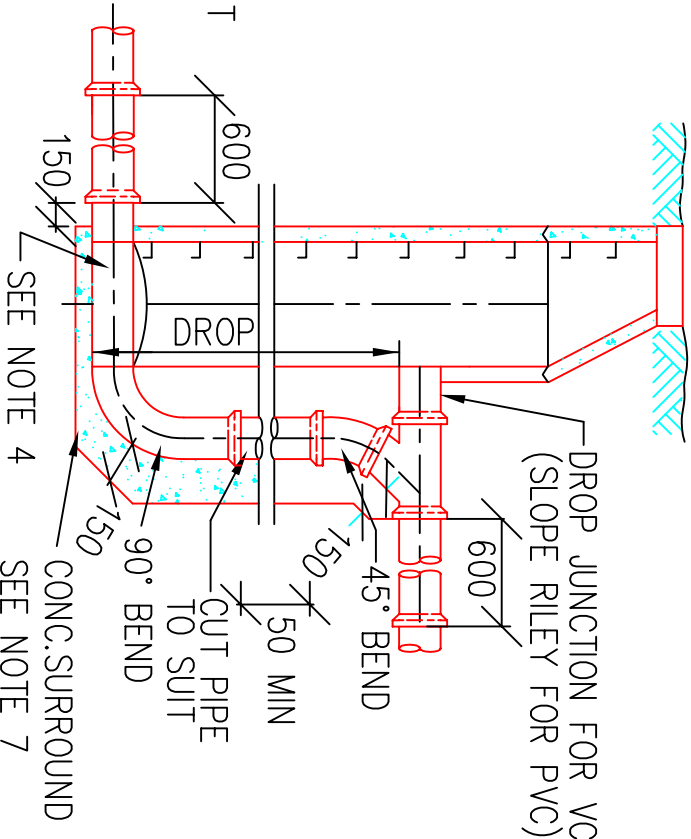


JOINT DETAIL 2

\* FOR STANDARD NOTES  
REFER SHEET 3



STANDARD STEP IRON



SECTION D - VERTICAL DROP  
( $375-\phi 600$ )

ØPIPE	VC	UPVC
150	460-630	360-550
225	540-730	510-805
300	620-910	610-960
375	750-1400	750-1945
450	810-1540	-
525	920-1770	-
600	1000-1960	-

DROP RANGE FOR SECTION C

ØPIPE	VC	UPVC
150	OVER 630	550
225	730	805
300	910	960
375	1400	1945
450	1540	-
525	1770	-
600	SPECIAL DESIGN REQUIRED	-

DROP RANGE FOR SECTION D

# SNOWY RIVER SHIRE COUNCIL

## MANHOLES

Surveyed By . . . . .  
Job No . . . . .  
Disk No . . . . .

Drawn By . . . . .  
Checked By . . . . .  
Passed By . . . . .

Scale  
N.T.S.

Approved By

Date

Datum

Sheet No  
2 of 3

Ref. No

Plan No  
SD 33b