

Warning, steel offcuts,
steel mesh and wire
mixed with timber or
rubble is **dangerous!**

HELP OUR LANDFILL TEAM STAY SAFE

- Loads of materials carelessly disposed of can damage specialist handling and recycling equipment.
- This can also put our landfill operators in danger.
- Please be mindful and sort your building waste carefully.
- Extend the life of our landfills (and your back pocket!) by diverting waste that can be reprocessed and recycled.

**On the work site let's
#recycleright**



LANDFILL HOURS AND CONTACTS

Bombala

Friday to Monday 10am – 4pm

Office: 02 6458 4112

Attendant: 0439 066 601

Jindabyne

Monday to Friday 9:30am – 4:30pm

Saturday 10am – 3pm

Sunday 10am – 3pm

Attendant: 02 6457 1064

Supervisor: 0428 411 045

Cooma

Monday to Friday 9:30am – 4:30pm

Saturday 1pm – 5pm

Sunday 11am – 5pm

Attendant: 02 6452 1105

Buyback Facilities

Scrapmart Cooma

Thursday and Friday 9:30am – 1:30pm

Saturday 1pm – 5pm

Contact: 0400 689 360

Scrapmart Jindabyne

Saturday and Sunday 10am – 3pm

Contact: 6457 1064



SCAN ME



SNOWY MONARO
REGIONAL COUNCIL

T 1300 345 345

E council@snowymonaro.nsw.gov.au

W snowymonaro.nsw.gov.au



**Construction
& demolition
waste disposal
savings
2022-2023**



SNOWY MONARO
REGIONAL COUNCIL

Building waste costs you a whopping **\$400** per tonne... but separated building waste can be disposed of at Council's landfills for cheaper rates or even **FREE**.

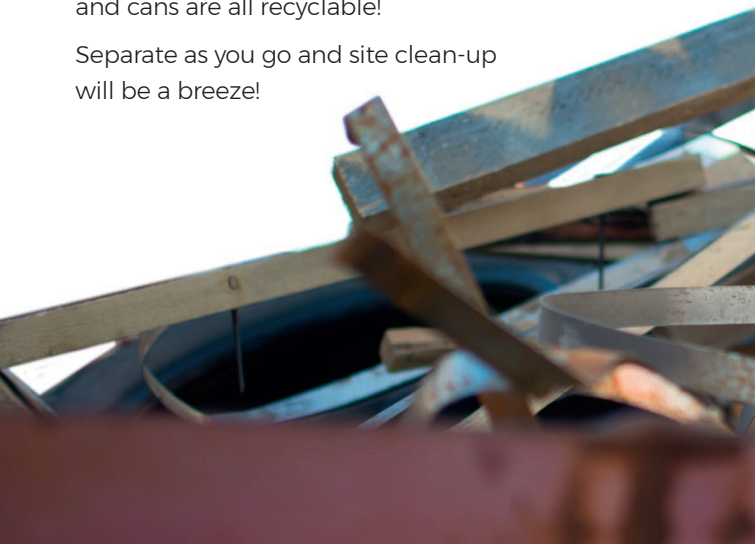
Did you know most of your building waste can be recovered, reprocessed or resold?

This isn't just about your back pocket, though it will save you a significant amount of money, it's also about looking after the environment and our local resources.

Talk to your tradies about separating building waste as they go... it's easy!

Make sure you have separate skips for Rubble, Metal and Wood. Just like home cardboard, plastic bottles and cans are all recyclable!

Separate as you go and site clean-up will be a breeze!



What building waste can be reprocessed and recycled?

- Clean cardboard from all new appliances, furniture and fittings
- Bricks, tiles, concrete and rubble
- Glass or plastic bottles, paper, cans, including empty/dry paint tins
- Doors, Windows, Cabinets, Sinks, and other appliances that are in good working order
- Structural Steel and other metal materials including old appliances. (Fridges that are not degassed will incur a disposal charge)
- Timber
- Greenwaste
- Clean Soil

Common mistakes



❌ **Reo and wire goes in the metal skip**



❌ **PVC pipe/conduit is general waste**



❌ **Cardboard goes in the recycling skip**



❌ **Keep soft plastics out of the recycling skip**

Fees & Savings

ALL of these items, if separated, can be disposed of at Council's landfills for cheaper rates, or even FREE.

- Second hand doors, windows, cabinets, sinks and appliances can be dropped off for FREE if they are in good working order and resold through ScrapMart shops plus Cooma and Jindabyne landfills.
- Scrap metal is received **FREE** of charge and includes broken appliances like dryers, stoves, dishwashers and fridges
- Virgin Excavated Natural Material VENM (soil) with an EPA declaration is FREE to drop off at landfills. Unclassified soil is charged at just **\$15** per tonne. Contaminated soil is charged at **\$230** per tonne
- Concrete/Bricks/Rock is charged at just **\$70** per tonne and is reprocessed into crushed concrete for resale to the public
- Greenwaste is charged at **\$80** per tonne
- Untreated timber is charged at **\$172.50** per tonne
- Mixed recyclables and cardboard are charged at **\$211** per tonne

Remember

If some of the items listed above are all mixed together and not separated, your load of building waste will cost you **\$400** per tonne.

Imagine how much money you can save by separating your waste.

For more information contact Council's Resource and Waste Department or visit our website: snowymonaro.nsw.gov.au/Environment-and-Waste/Waste-and-Recycling/Fees-and-Charges