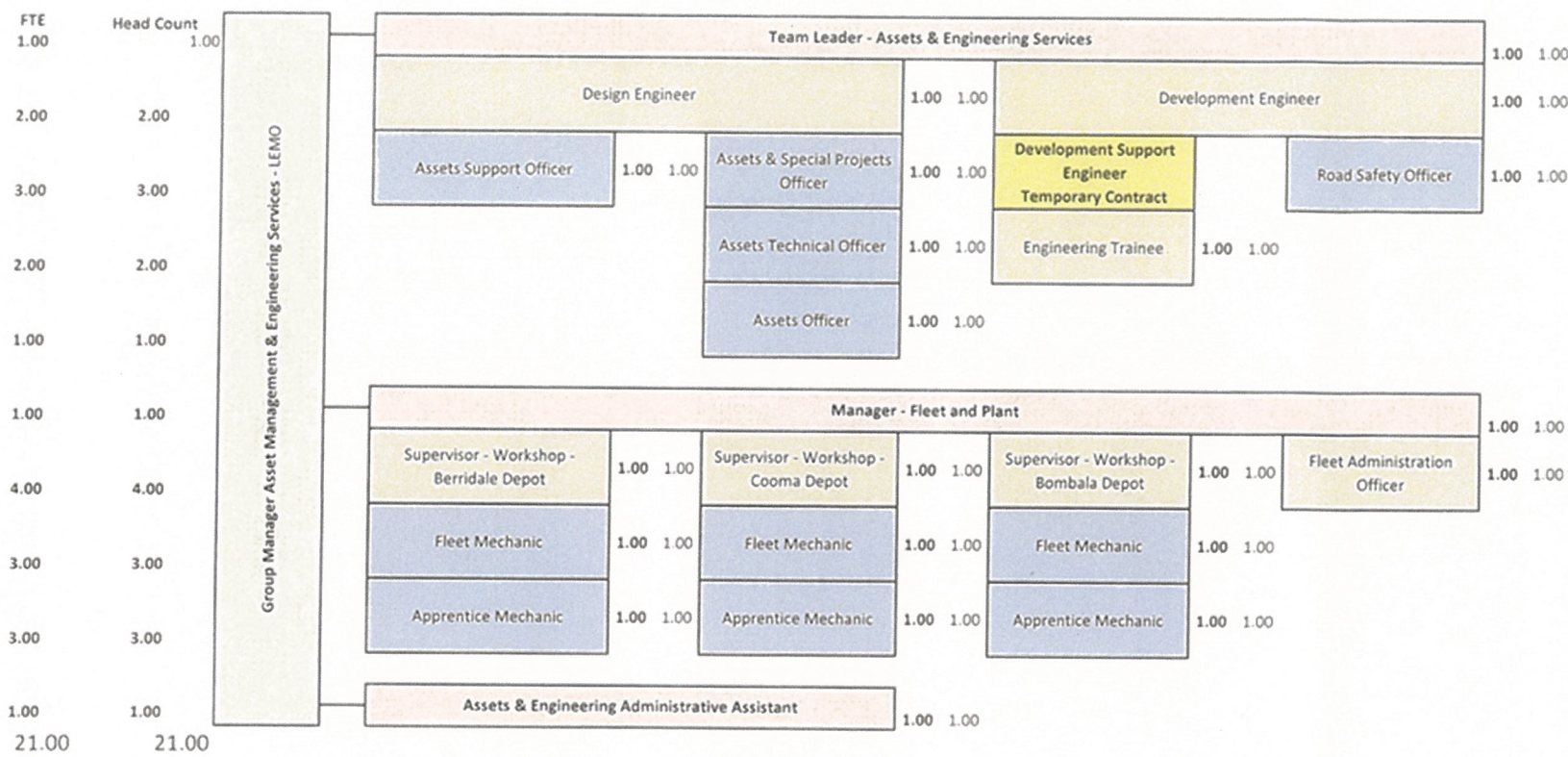
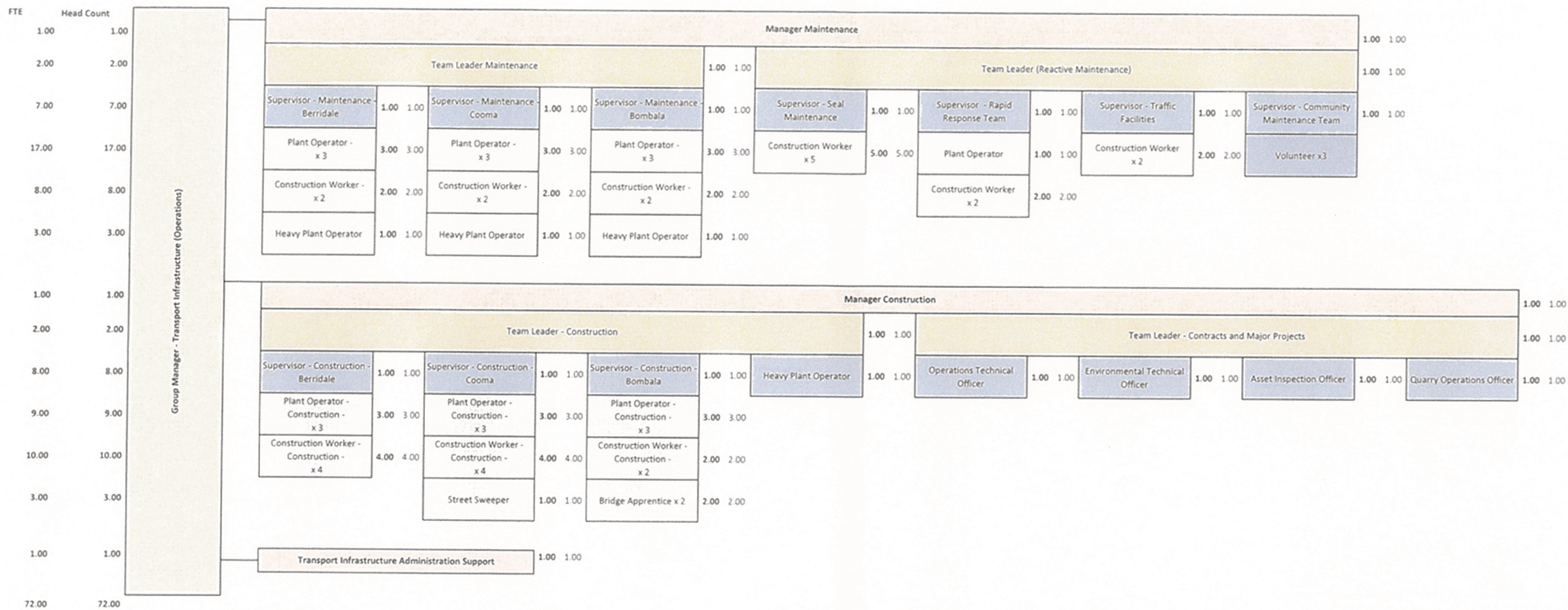


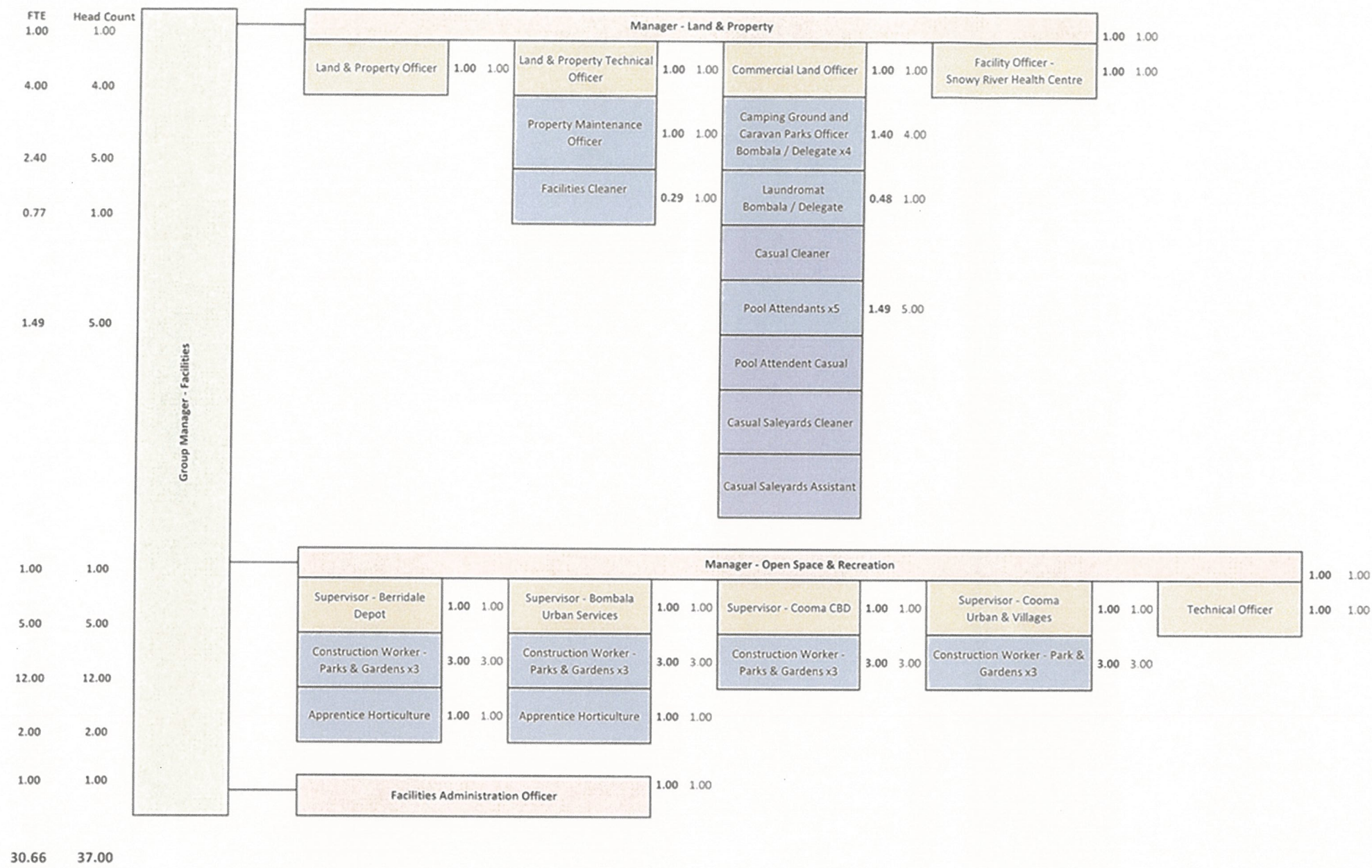
Approved
John Keir
30/6/17.



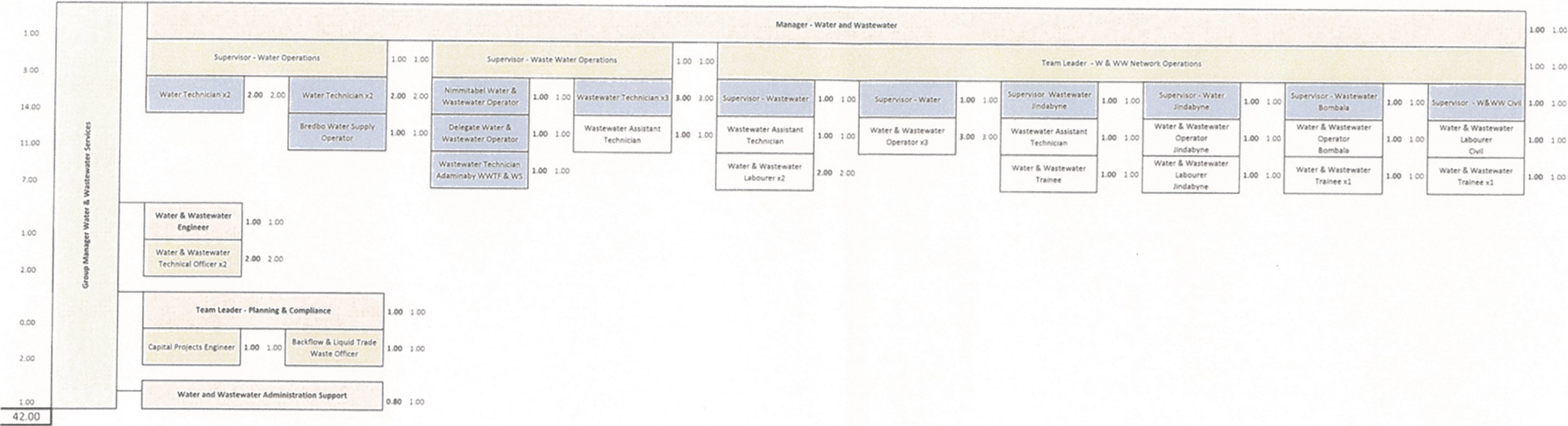
Approved
J. Harris
30/6/17



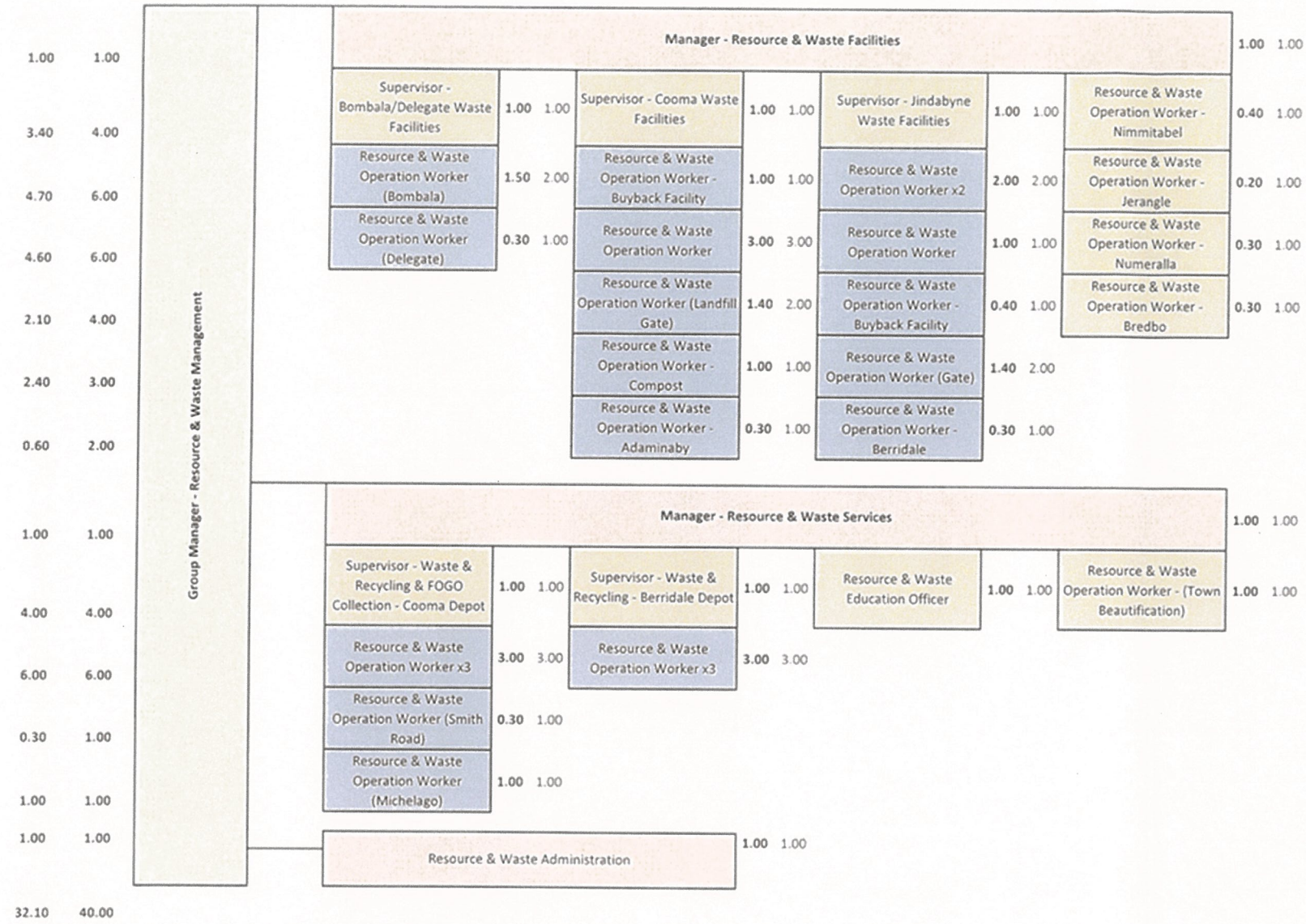
Approved:
30/6/17



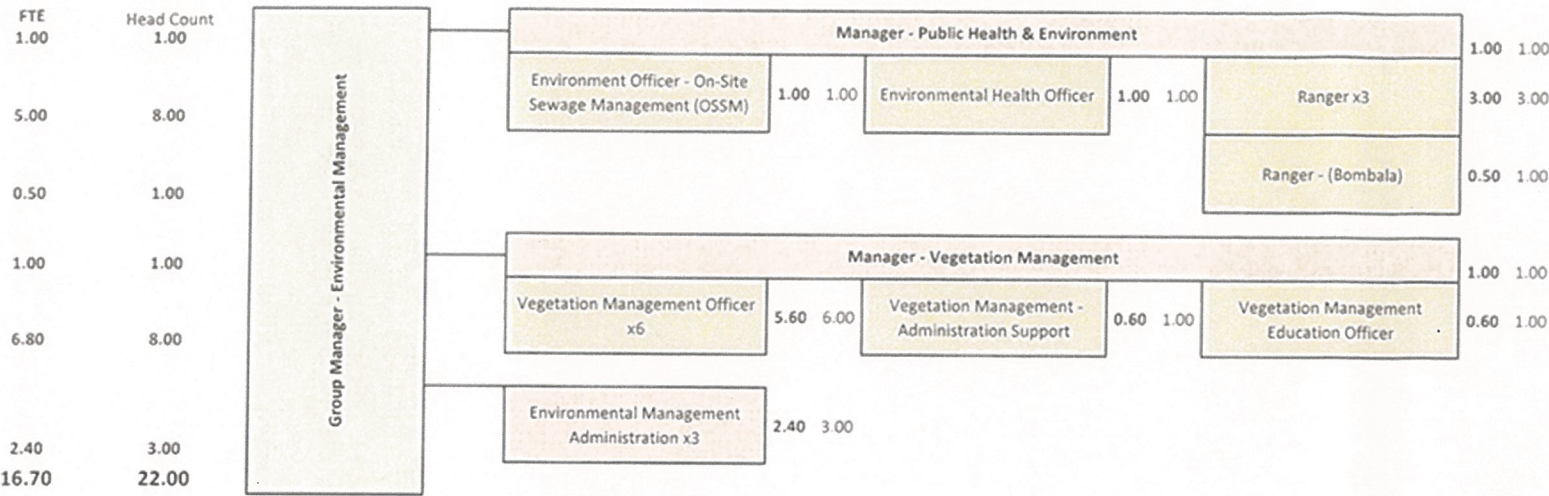
Approved
30/6/17



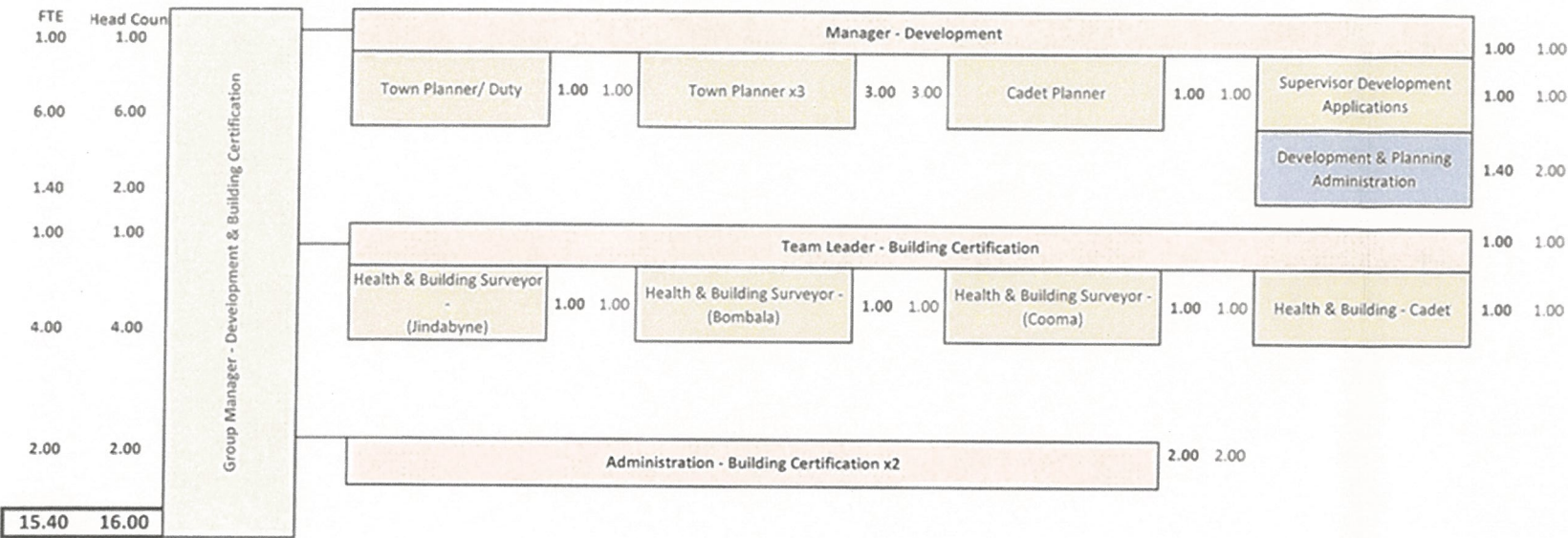
Approved.
J. H. Harris
30/6/17



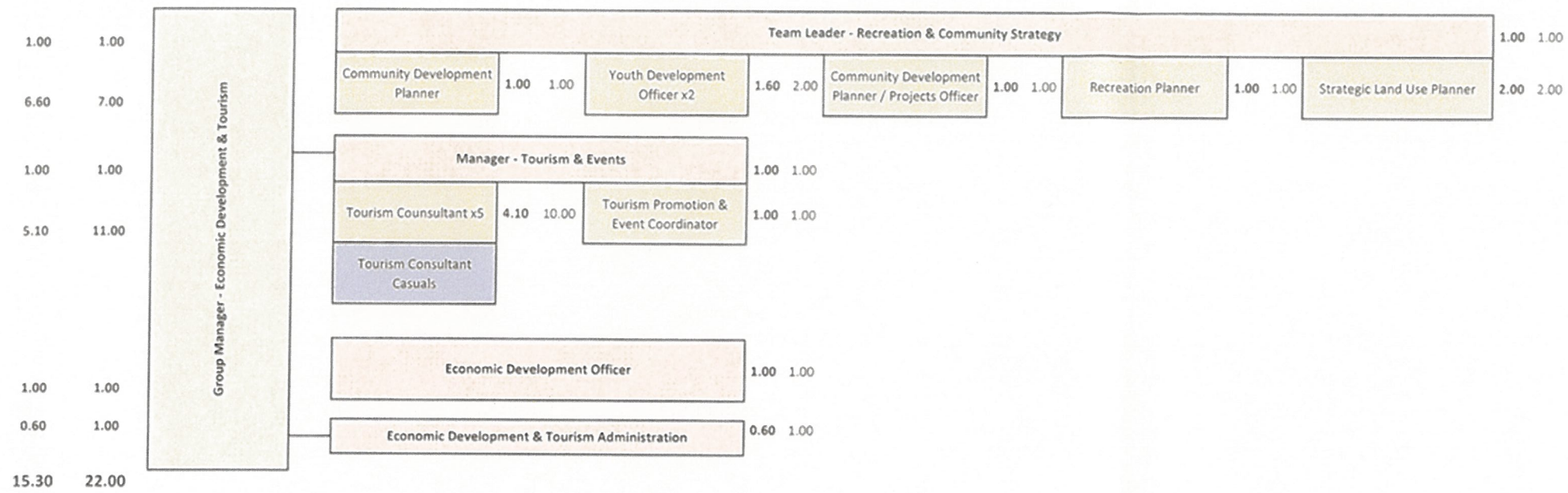
Approved.
J. L. Harris
30/6/17.



Approved.
J. Vermeir
30/6/17.

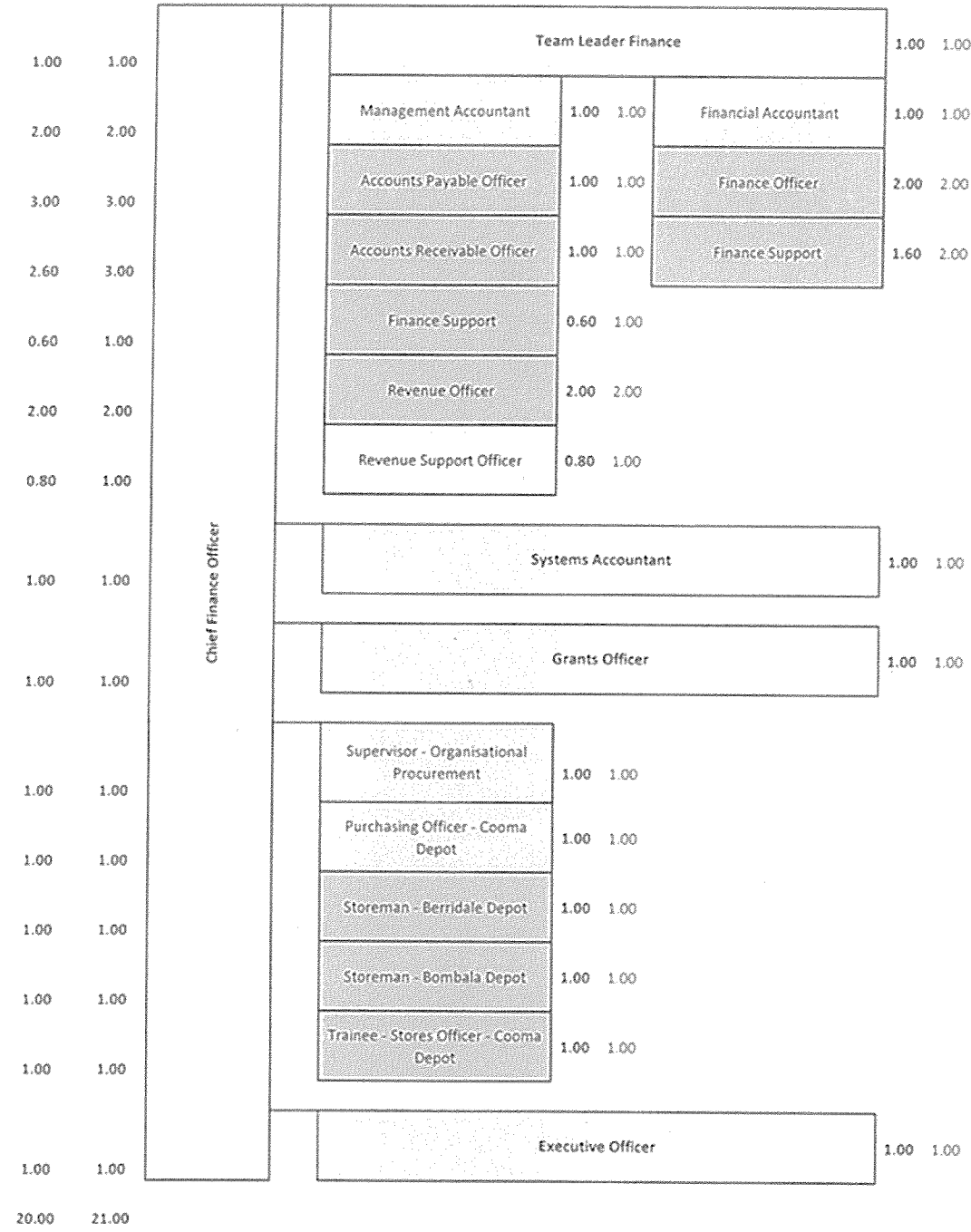


Approved.
John Verino
30/6/17.

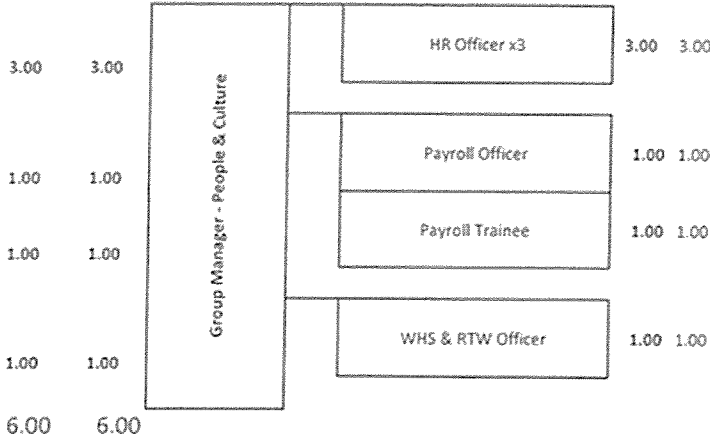


Note - only 1.82 of the 4.10 FTE is currently being utilized by permanents staff leaving 2.28 to bring the x5 into some sort of compliant PPT arrangement

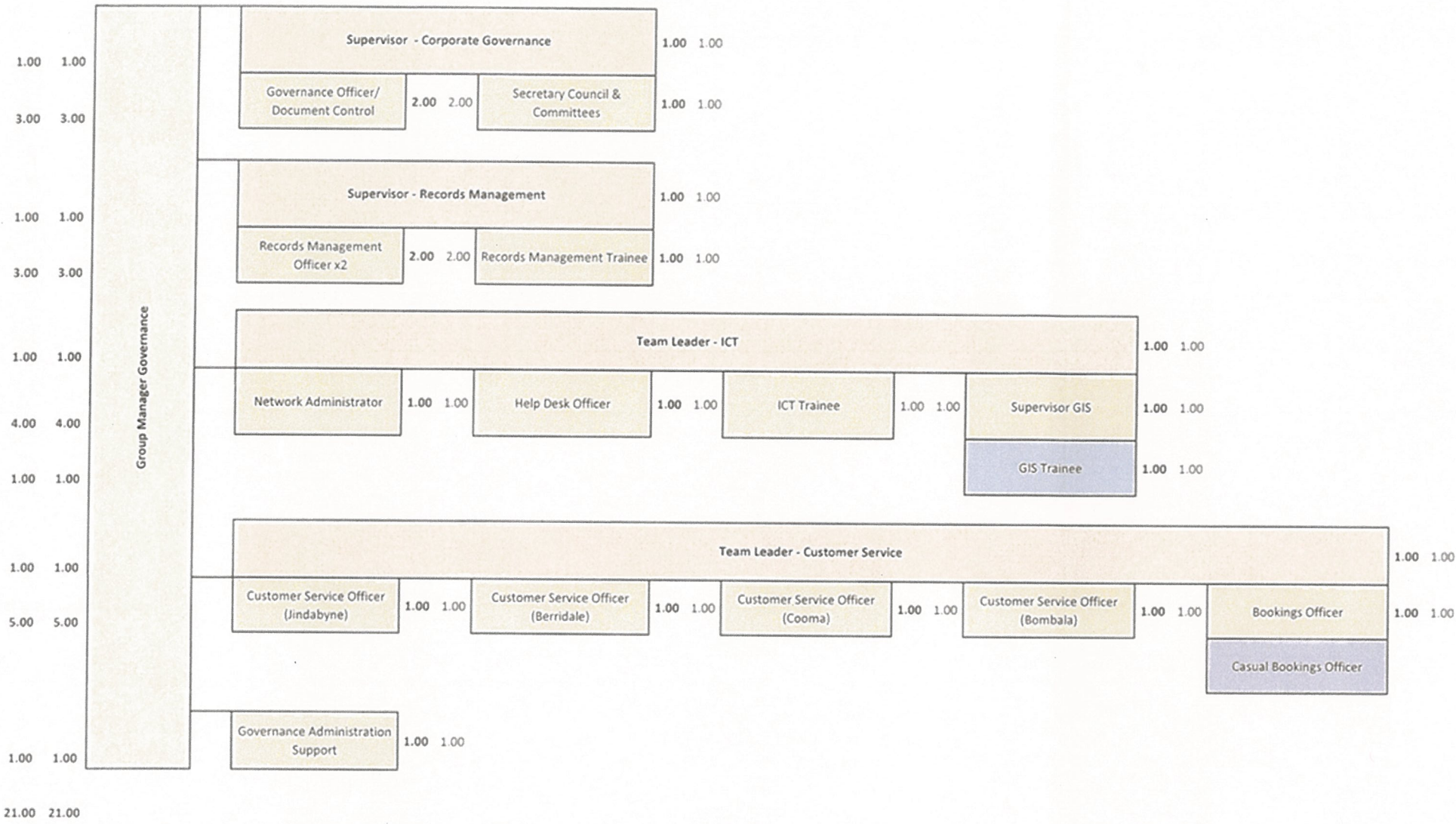
Approved
30/6/17



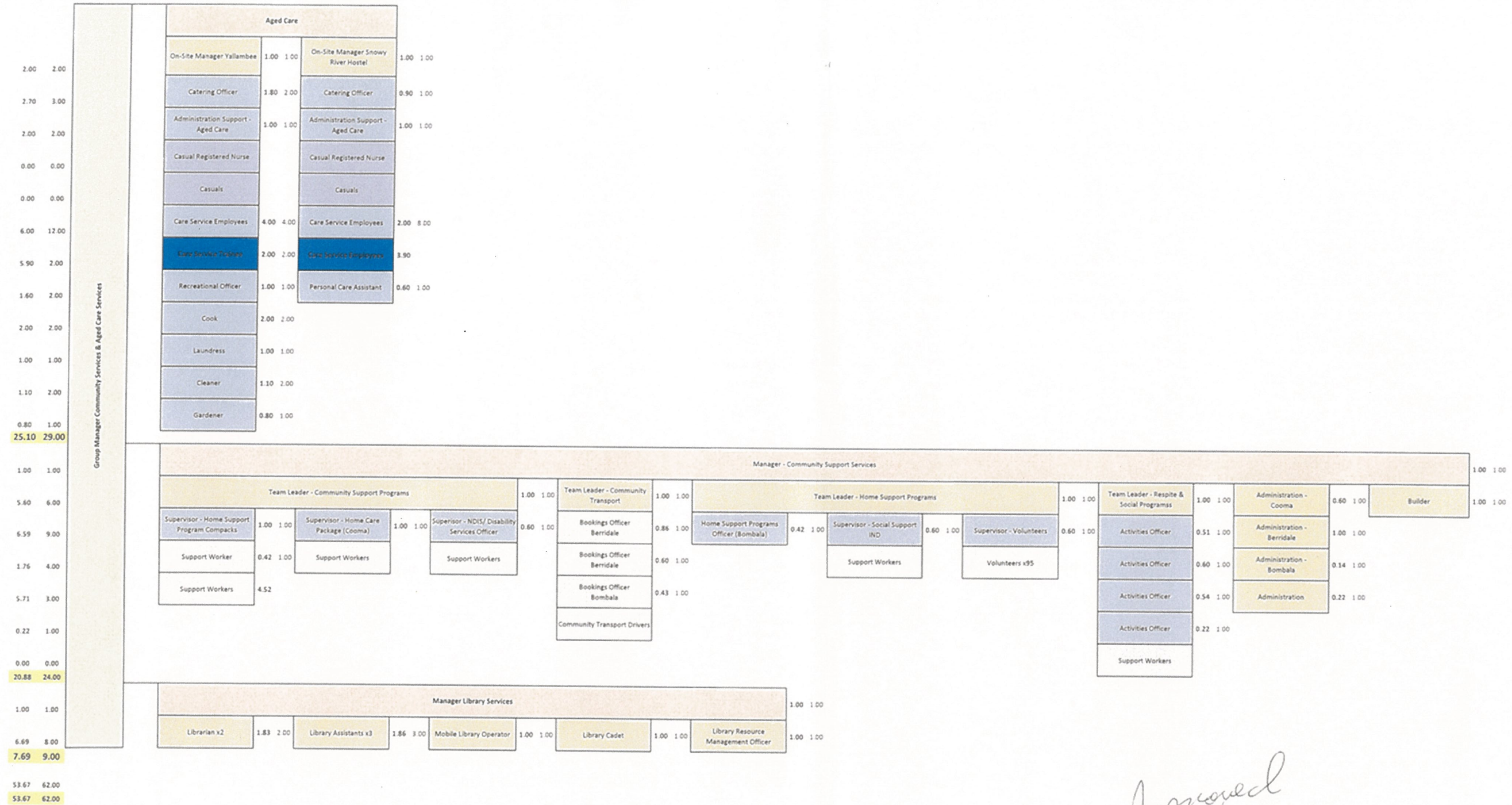
Approved.
30/6/17



Approved.
John Verrill
30/6/17.



Approved
30/6/17



Approved
30/6/17

